



**24 OCTOBER 2024**

## EG SECURES DEVELOPMENT APPROVAL FOR REDFERN CO-LIVING PROJECT

**24 October 2024** – (Sydney, Australia) EG has secured development approval for a new co-living project at 175-177 Cleveland Street and 1-5 and 6-8 Woodburn Street, Redfern, NSW. The mixed-use six (6) storey building will offer 200 self-contained studios, commercial space, and cafe space on the ground floor.

The NSW Independent Planning Commission reviewed the application and endorsed the development, highlighting its strategic importance in boosting rental housing supply and diversity. The Commission also recognised the project as a well-considered and efficient use of land, noting its potential to invigorate the public domain and provide valuable economic and community benefits in a highly accessible location.

Early engagement, including with First Nations stakeholders, informed the development. Additionally, public artwork prepared in consultation with local First Nations artists will be incorporated into the building's design, respecting the cultural significance of the Redfern area.

"This development aligns with our commitment to 'Build in Good' and will provide exceptional living experiences" said David Workman, Divisional Director – Urban and Community Planning at EG. "We're excited to contribute to the respectful revitalisation of Redfern by offering a high-quality, community-focused project."

Designed by leading Sydney-based architect [Mark Shapiro Architects](#), the project is set to raise the bar for co-living housing in Sydney's inner city. The building will feature a range of communal spaces designed to foster social interaction and a sense of belonging, including an internal sunlit courtyard, gymnasium, co-working / meeting areas, and rooftop garden, kitchen, and dining area.

It will provide more affordable, high-quality residential accommodation for young professionals and students seeking proximity to the CBD, universities, and future commercial developments in the area.

The area also benefits from significant infrastructure investment, including the recent opening of the Sydney Metro rail project with a stop at the upgraded Central Station transport interchange, in addition to the existing rail network.

- ENDS -

**EG Funds Management Pty Ltd**

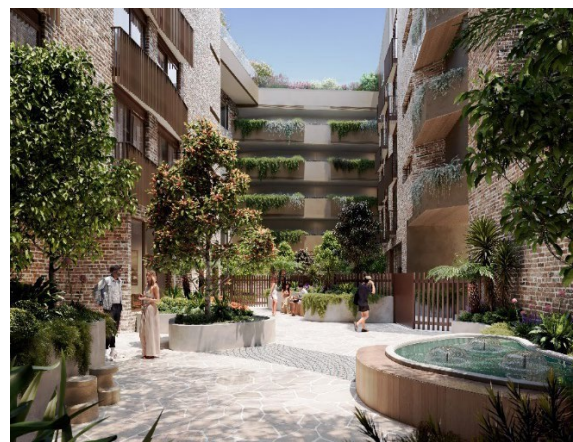
ABN. 22 108 198 492

Governor Phillip Tower  
Level 21, 1 Farrer Place  
Sydney NSW 2000 Australia

T. +61 2 9220 7000  
[www.eg.com.au](http://www.eg.com.au)



CGI renders of the  
approved  
development in  
Redfern



**EG Funds Management Pty Ltd**

ABN. 22 108 198 492

Governor Phillip Tower  
Level 21, 1 Farrer Place  
Sydney NSW 2000 Australia

T. +61 2 9220 7000  
[www.eg.com.au](http://www.eg.com.au)

## **A BETTER PATH TO BETTER RETURNS.**

EG is one of Australia's largest independent real estate investment platforms.

We are committed to investing in property technology, keeping super funds and private wealth clients ahead in both rising and falling markets.

Our success is underpinned by B.I.G. Thinking®. We uncover what's truly best for both communities and investors.

We build in good, so you can build in growth.

**For further information please contact:**

**Angela Maxwell**  
**+61 02 9220 7000**  
**+61 450 450 154**  
[amaxwell@eg.com.au](mailto:amaxwell@eg.com.au)

